



Designed to Perform. Built to Last.

Full Range

*Process Heating and
Cooling System*
50°F to 650°F (10°C to 343°C)

Continuous Temperature Control

Mokon's heat transfer fluid based Full Range temperature control system offers a combination heating and cooling system all in one package. A Mokon heat transfer fluid system, combined with an Iceman chiller, integrates the benefits and features of both products into one compact, self-supporting unit.

The Full Range system is ideal for applications requiring multi-zone control, processes requiring both heating and cooling and/or a wide variety of temperatures, or where water supply to a heat exchanger is not accessible. It is available in multiple sizes, configurations, and a variety of cooling, heating and pumping capacities.

The overall design provides for long-life, durability and accurate continuous process control. Traditional Mokon quality and craftsmanship can be found throughout, such as nonferrous construction on the cooling loop and the incorporation of highly accurate microprocessor-based controls. All these features and more in a compact design with Mokon reliability built in!

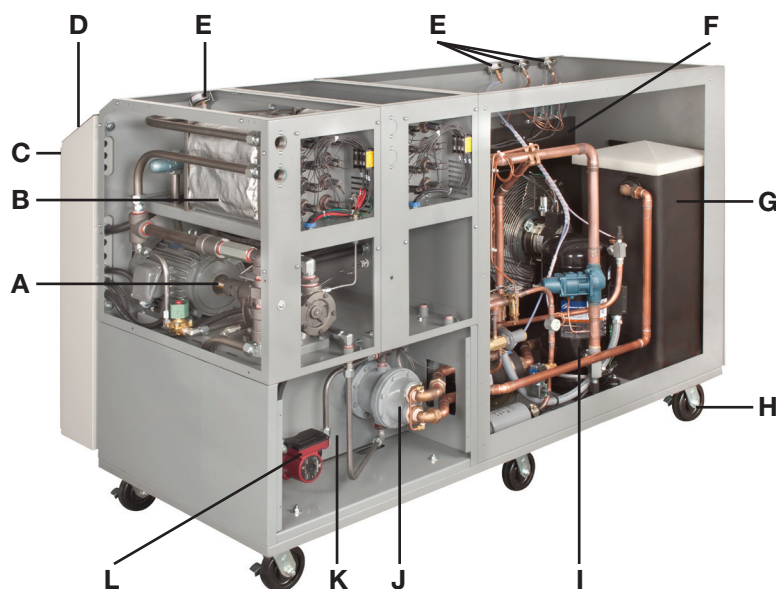
Features:

- Heating capacities up to 48 kW
- Pumping capacities up to 30 GPM
- Rapid cool down capabilities
- UL 508A labeled electrical sub-panel
- Meets NFPA 79 electrical safety standards

Applications:

- Jacketed vessels, mixers and reactors
- Multi-zone processes
- Installations where rapid cooling is required
- Laboratory, sanitary and chemical process applications

Continuous Temperature Control 50°F to 650°F (10°C to 343°C)

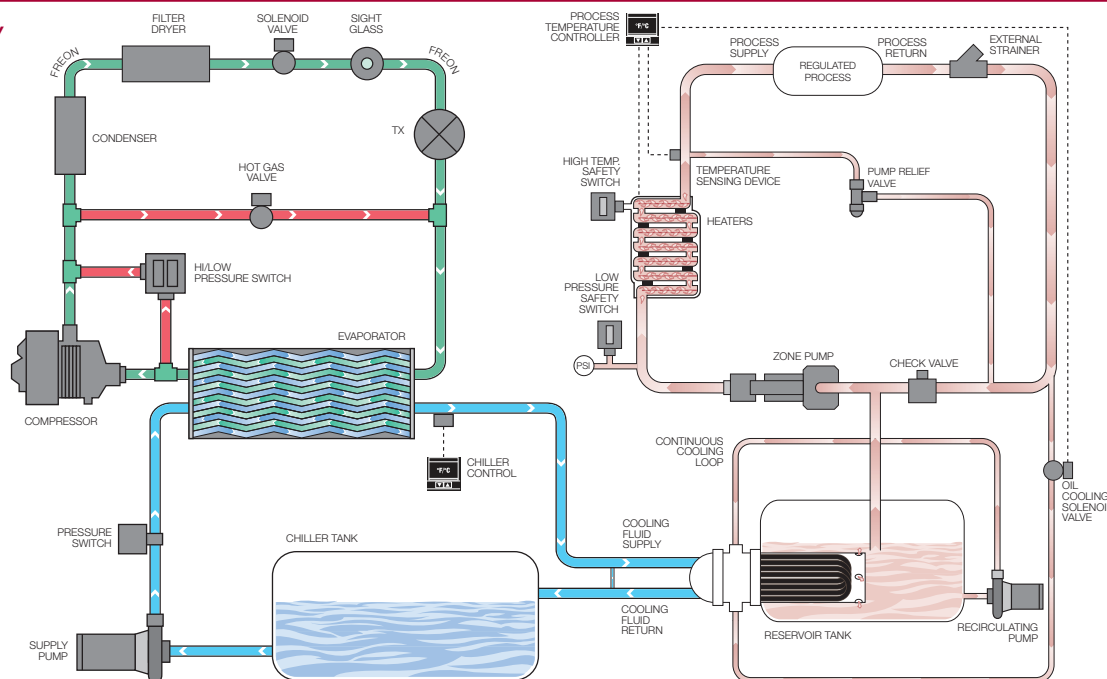


Standard Features

- A** Positive displacement pump/motor
- B** Insulated heater bundle
- C** NEMA rated electrical enclosure with main disconnect switch
- D** Microprocessor-based controller
- E** Glycerin-filled pressure gauges
- F** Air-cooled condenser (shown) or water-cooled condenser
- G** Heavy-duty insulated plastic tank
- H** Heavy-duty braking casters
- I** Scroll compressor
- J** Cooling heat exchanger
- K** Continuous flow cool oil reservoir
- L** Recirculating pump

System standard with NFPA 79 and UL 508A labeled electrical sub-panel

Typical Flow Schematic



Controls

A microprocessor-based controller provides dual LCD indication of your process fluid setpoint and actual temperature to ensure process control accuracy. Control options include serial communications, SPI protocol, brand name control or host interface capabilities.

Options

Mokon offers a variety of options and accessories to meet specific customer needs including auto fill, low water level (reservoir) indication, safety alarms and more. A selection of voltages and frequencies is available including standard 230 or

460V and optional 208V, 380V, 415V and 575V in both 50 and 60 Hz. Please contact Mokon for more information.

Product Testing and Warranty

All Mokon Full Range systems are qualified for service by rigid, simulated field tests, are 100% factory calibrated and run tested. Mokon offers a one-year warranty as standard.

For more information on Mokon's Full Range process heating and cooling system or other products, call our sales department today.

Technical data shown is subject to change without notice. The company will endeavor to supply the equipment as illustrated but reserves the right to make dimensional and other design changes as required.



2150 Elmwood Avenue, Buffalo, New York 14207
Phone: 716-876-9951 ■ Fax: 716-874-8048
www.mokon.com ■ E-mail: sales@mokon.com



Designed to Perform. Built to Last.

FullRangeHTF 03/18 MOK7662