



Designed to Perform. Built to Last.

HTFSystem
600 Series

*Heat Transfer Fluid System
Up to 600°F (315°C)*

Continuous High Temperature Control

If your process requires elevated temperature control up to 600°F, Mokon's HTF 600 Series is what you need for continuous high temperature process control. Offered with a pumping capacity of 20 GPM, single, dual, or triple zone configurations, and varying heating capacities, Mokon can match a system to meet your temperature control processing requirements.

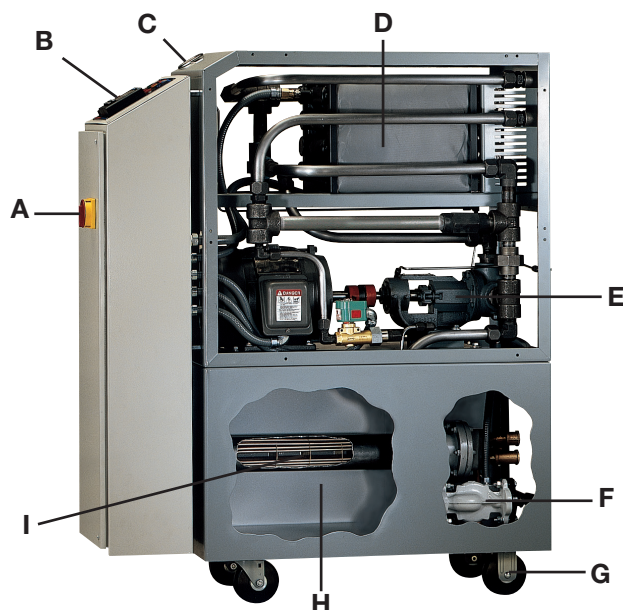
The HTF 600 Series features Mokon's unique heating philosophy and cool oil reservoir design, offering the safest and most efficient means of cooling available.

A self-tuning, microprocessor-based controller with advanced PID overshoot protection ensures stable, straight-line control for extreme accuracy.

All Mokon HTF systems come standard with a UL 508A (Underwriters Laboratories) labeled electrical sub-panel and meet NFPA 79 (National Fire Protection Association) electrical safety standards. Systems include motor, heater and transformer fusing and wiring practices to ensure operator safety.

- **Sleek vertical design**
- **Continuous flow cool oil reservoir**
- **Energy efficient insulated heater manifold**
- **High temperature and low pressure safety switches**
- **Microprocessor-based controller**
- **UL 508A labeled electrical sub-panel**
- **Meets NFPA 79 standards**

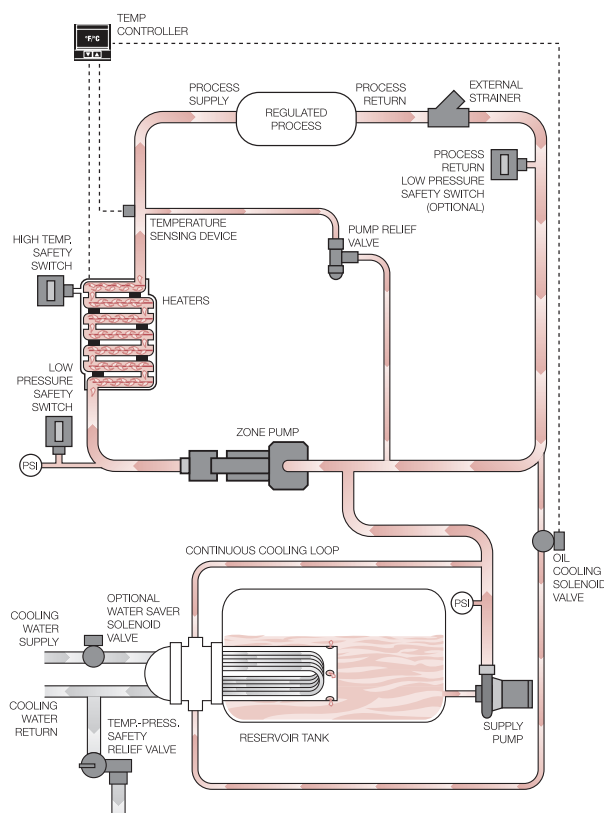
Continuous Temperature Control



Standard Features

- A** NEMA rated electrical enclosure with safety door disconnect switch
- B** Microprocessor-based controller mounted in operator-friendly orientation
- C** Glycerin-filled pressure gauges
- D** Insulated manifold with heaters
- E** Positive displacement pump
- F** Supply pump
- G** Heavy-duty ball bearing casters
- H** Continuous flow cool oil reservoir
- I** Cooling heat exchanger
- J** NFPA 79 and UL 508A labeled electrical sub-panel (not shown)

600 Series Flow Schematic



Specifications—HTF System 600 Series (100°F-600°F*)

Horsepower and Flow Rate	# of Zones	Heating Capacity kW per Zone (total kW)	Total Amps**	Reservoir Tank Volume (gallons)	Cabinet Dimensions L x W x H (inches)	Shipping Weight (lbs.)
2 Hp 20 GPM and up to 100 PSI	1	12 [†]	20.1	38	41 x 30 x 51	612
		18 [†]	27.6	38	41 x 30 x 51	642
		24 [†]	35.1	38	41 x 30 x 51	672
		30	41.9	38	41 x 30 x 51	702
		36	49.5	38	41 x 30 x 51	730
	2	48	64.5	38	41 x 30 x 62	822
		12 (24)	37.9	38	41 x 30 x 51	875
		18 (36)	52.9	38	41 x 30 x 62	965
		24 (48)	67.9	38	41 x 30 x 62	1021
		30 (60)	82.9	58	41 x 45 x 62	1256
	3	36 (72)	98.1	58	41 x 45 x 62	1312
		48 (96)	128.2	58	41 x 45 x 74	1456
		12 (36)	56.4	58	41 x 45 x 51	1261
		18 (54)	78.9	58	41 x 45 x 62	1345
		24 (72)	101.4	58	41 x 45 x 62	1479

* 650°F temperature available; consult factory

** 460/3/60 (for 230V, double the listed amps)

[†] Available in 15" wide cabinet. Please contact Mokon.

Standard heat exchanger= 3.6 sq. ft. for all HTF Systems

Connections: 1" process, 1" water

Product Testing & Warranty

All Mokon temperature control systems are qualified for service by rigid, simulated field tests, and they are factory calibrated before shipping. Mokon offers a one-year warranty as standard.

For more information on Mokon's HTF 600 Series or other products, call our sales department today.

Technical data shown is subject to change without notice. The company will endeavor to supply the equipment as illustrated but reserves the right to make dimensional and other design changes as required.



2150 Elmwood Avenue, Buffalo, New York 14207
Phone: 716-876-9951 ■ Fax: 716-874-8048
www.mokon.com ■ E-mail: sales@mokon.com



Designed to Perform. Built to Last.

HTF600 6/16 MOK6945