



Continuous Compact Control

Mokon's HTF 350 Series is designed specifically to offer our customers a compact, safe and affordable means of accurate process temperature control up to 350°F. The small footprint and design of this system are ideal for process applications where space is limited and continuous temperature control is required.

The HTF 350 Series is available in two flow rates, 5 and 10 GPM. Both models offer a choice of three systems to best fit your application needs. The heating system provides up to 24 kW of heating capacity, and will heat your process automatically upon demand. The cooling systems are sized with heat exchangers to match the amount of heat to be systematically removed from your process. The heating/cooling system combines both heating and cooling for total temperature control of your process, where varying demands are common.

All Mokon HTF systems come standard with a UL 508A (Underwriters Laboratories) labeled electrical sub-panel and meet NFPA 79 (National Fire Protection Association) electrical safety standards. Systems include motor, heater and transformer fusing and wiring practices to ensure operator safety.



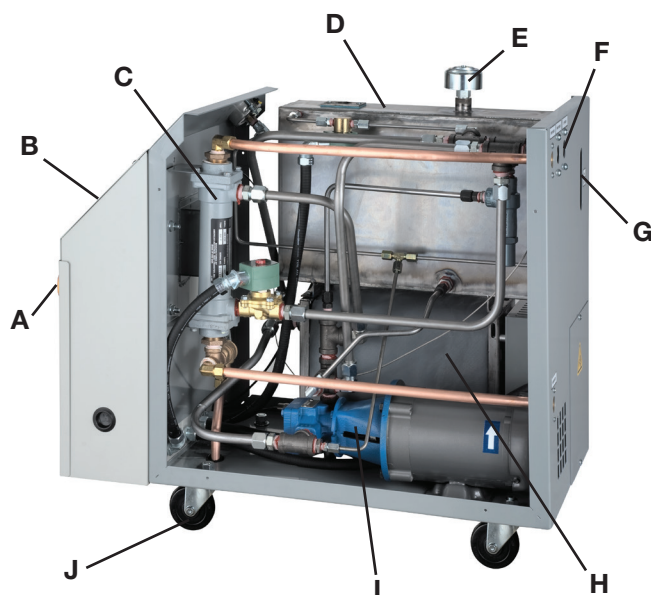
Designed to Perform. Built to Last.

HTFSystem
350 Series

*Heat Transfer Fluid System
Up to 350°F (177°C)*

- **Compact and portable**
- **High efficiency gear pump with TEFC motor**
- **Energy efficient insulated heater manifold**
- **Energy temperature and low pressure safety switches**
- **Microprocessor-based controller**
- **UL 508A labeled electrical sub-panel**
- **Meets NFPA 79 standards**

Continuous Temperature Control

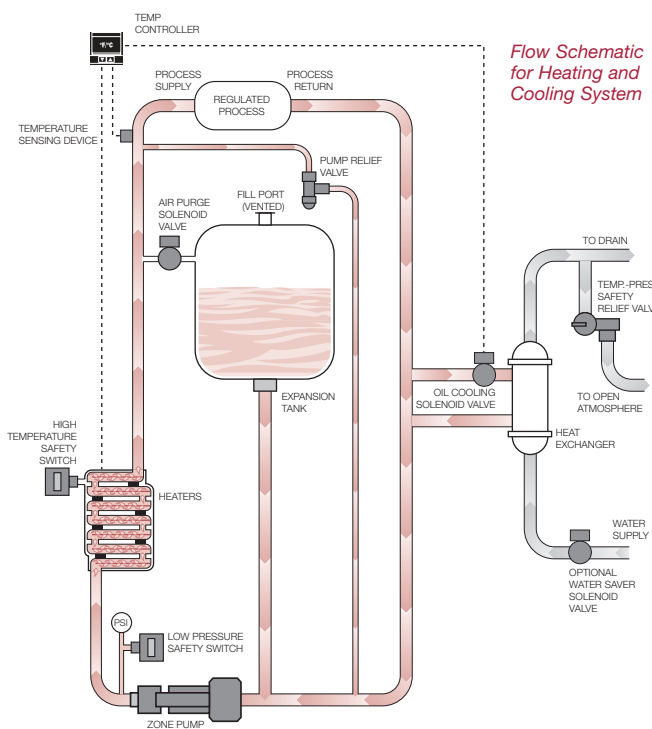


Standard Features

- A** NEMA rated electrical enclosure with safety door disconnect switch
- B** Microprocessor-based controller mounted in operator-friendly orientation
- C** Shell and tube heat exchanger (cooling or heating/cooling systems only)
- D** Expansion/Fill tank
- E** Expansion fill port (vented)
- F** Process and cooling water connections
- G** Sight glass
- H** Insulated manifold with heaters
- I** Gear pump with TEFC motor
- J** Heavy-duty ball bearing casters

System standard with NFPA 79 and UL 508A labeled electrical sub-panel

350 Series Flow Schematic



Specifications – HTF System 350 Series (up to 350°F)

Flow Rate & Pressure	Model	TEFC Motor (Hp)	Cooling Capacity	Heating Capacity (kW)	Total Amps*	Reservoir (Expansion) Tank Volume (gallons)	Cabinet Dimensions L x W x H (inches)	Shipping Weight (lbs.)
5 GPM up to 60 PSI	Heating	1/3	—	3	4.6	4.7	32 x 17 x 27	163
				6	8.3			168
				12	15.9		33 x 17 x 52	210
				18	23.4			325
	Cooling	1/3	1.4 sq. ft. shell & tube heat exchanger	—	—	4.7	32 x 17 x 27	145
				—	—			—
				3	4.6		32 x 17 x 27	173
				6	8.3			178
10 GPM up to 60 PSI	Heating & Cooling	1/3	1.4 sq. ft. shell & tube heat exchanger	12	15.9	4.7	32 x 17 x 27	250
				18	23.4			375
				24	31.0		33 x 17 x 52	390
				—	—			—
	Heating	3/4	—	6	8.9	4.7	32 x 17 x 27	210
				9	12.7			238
				12	16.7		33 x 17 x 52	310
				18	24.2			435
	Cooling	3/4	1.4 sq. ft. shell & tube heat exchanger	24	31.7		32 x 17 x 27	450
				—	—			211
				—	—		32 x 17 x 27	225
				6	8.9			253
	Heating & Cooling	3/4	1.4 sq. ft. shell & tube heat exchanger	9	12.7	4.7	32 x 17 x 27	325
				12	16.7			325
				18	24.2		33 x 17 x 52	450
				24	31.7			465

* 460/3/60 (for 230V, double the listed amps)

All process connections and water connections are 1/2"

Product Testing & Warranty

All Mokon temperature control systems are qualified for service by rigid, simulated field tests, and they are factory calibrated before shipping. Mokon offers a one-year warranty as standard.

For more information on Mokon's HTF 350 Series or other products, visit our website or contact us direct.

Technical data shown is subject to change without notice. The company will endeavor to supply the equipment as illustrated but reserves the right to make dimensional and other design changes as required.



2150 Elmwood Avenue, Buffalo, New York 14207
Phone: 716-876-9951 ■ Fax: 716-874-8048
www.mokon.com ■ E-mail: sales@mokon.com



Designed to Perform. Built to Last.

HTF350 02/19 MOK7859