



Designed to Perform. Built to Last.

HTFSystem
HF-2 Series

Heat Transfer Fluid System
Up to 600°F (315°C)

Continuous High Flow High Temperature Control

Mokon's HTF HF-2 Series provides accurate temperature control up to 600°F with improved performance, energy efficiency and reduced space requirements for large flow and higher heating capacity applications.

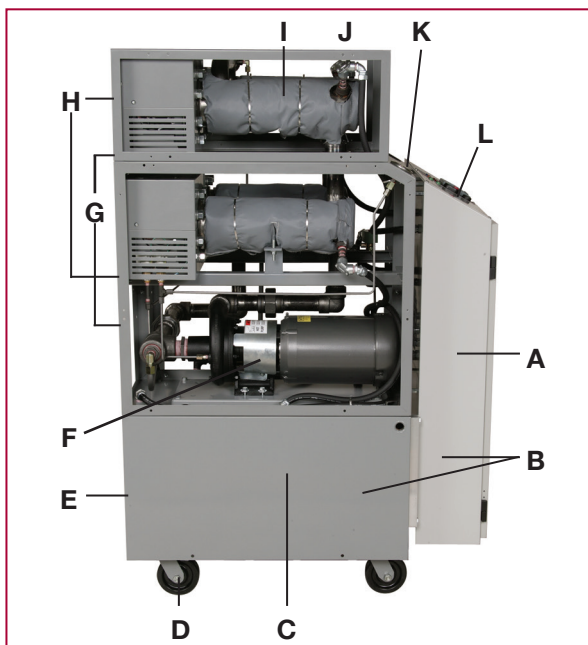
Mokon's HF-2 Series systems are available in single and dual zone configurations, with pumping capacities of 40, 60, 90 and 120 GPM. Various heating capacities up to 144 kW are offered to match your process requirements.

The HF-2 Series features a 12 kW heater canister mounted in the traditional Mokon horizontal forced fluid flow design, proven in our systems for over 60 years. This heater design, along with an all-welded construction, reduces internal piping and limits potential leak points. The system also features Mokon's unique cool oil reservoir design to ensure accurate and safe process temperature control and cooling.

All Mokon HTF systems come standard with a UL 508A (Underwriters Laboratories) labeled electrical sub-panel and meet NFPA 79 (National Fire Protection Association) electrical safety standards. Systems include motor, heater and transformer fusing and wiring practices to ensure operator safety.

- Continuous flow cool oil reservoir
- Welded construction to minimize threaded connections
- Energy efficient insulated heater manifold
- High temperature limit control and low pressure safety switch
- Microprocessor-based controller
- UL 508A labeled electrical sub-panel
- Meets NFPA 79 standards

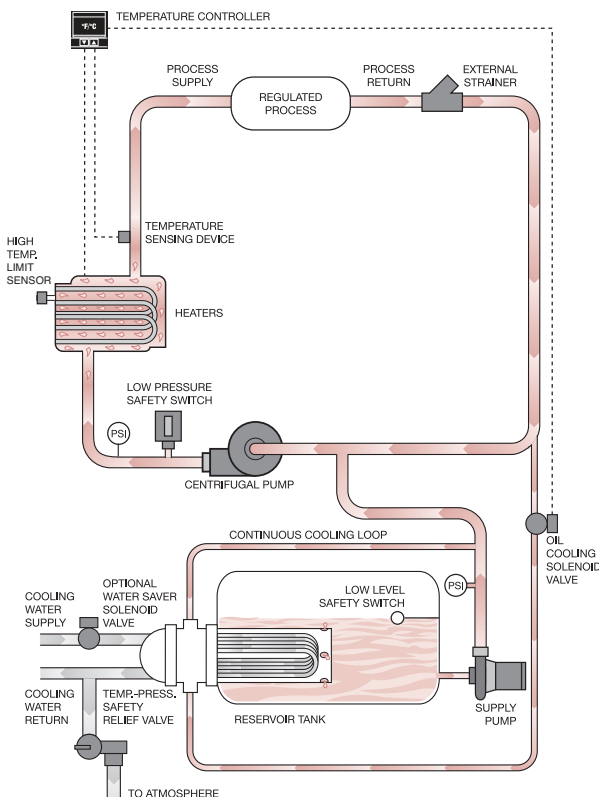
Continuous Temperature Control



Standard Features

- A** NEMA rated electrical enclosure
- B** Powder coated cabinetry and electrical box
- C** Continuous flow cool oil reservoir
- D** Heavy-duty ball bearing casters
- E** Cooling water connections
- F** Centrifugal pump
- G** Easily accessible process connections
- H** Heater access panel
- I** Insulated manifold with heaters
- J** High temperature limit sensor (not shown)
- K** Glycerin-filled pressure gauges
- L** Microprocessor-based controller
- M** NFPA 79 and UL 508A labeled electrical sub-panel (not shown)

HF-2 Series Flow Schematic



Specifications—HTF System HF-2 Series (100°F-600°F*)

Horsepower, Flow Rate and Pressure	Number of Zones	Heating Capacity kW per Zone (total kW)	Total Amps**	Reservoir Tank Volume (gallons)	Cabinet Dimensions L x W x H (inches)
3 Hp 40 GPM to 51 PSI	1	12	18.9	38	41 x 30 x 51
		24	33.9	38	41 x 30 x 51
		36	49.0	38	41 x 30 x 51
		48	64.0	38	41 x 30 x 62
		60	79.2	38	41 x 30 x 62
		72	94.2	38	41 x 30 x 74
	2	96	124.4	58	41 x 45 x 62
		12 (24)	37.7	38	41 x 30 x 51
		24 (48)	67.8	78	41 x 60 x 51
		36 (72)	98.0	78	41 x 60 x 51
5 Hp 60 GPM to 56 PSI	1	48 (96)	128.2	78	41 x 60 x 62
		12	21.1	38	41 x 30 x 51
		24	36.1	38	41 x 30 x 51
		36	51.2	38	41 x 30 x 51
		48	66.2	38	41 x 30 x 62
		60	81.4	38	41 x 30 x 62
	2	72	96.4	38	41 x 30 x 74
		96	126.6	58	41 x 45 x 62
		12 (24)	42.1	38	41 x 30 x 51
		24 (48)	72.2	78	41 x 60 x 51
5 Hp 90 GPM to 52 PSI	1	36 (72)	102.4	78	41 x 60 x 62
		48 (96)	132.6	78	41 x 60 x 62
		12	23.8	38	41 x 30 x 51
		24	38.9	38	41 x 30 x 51
		36	53.9	38	41 x 30 x 64
		48	69.0	38	41 x 30 x 64
	2	60	84.1	38	41 x 30 x 64
		72	99.2	38	41 x 30 x 78
		96	129.3	58	41 x 45 x 78
		108	144.4	58	41 x 45 x 78
5 Hp 120 GPM to 48 PSI	1	120	159.5	78	41 x 60 x 78
		132	174.6	78	41 x 60 x 78
		144	189.7	78	41 x 60 x 78
		12 (24)	46.5	38	41 x 30 x 51
		24 (48)	76.7	78	41 x 60 x 51
		36 (72)	106.7	78	41 x 60 x 64
	2	48 (96)	134.1	78	41 x 60 x 64
		60 (120)	171.5	78	41 x 60 x 78
		72 (144)	197.3	78	41 x 60 x 78
		96	129.3	58	41 x 45 x 78
5 Hp 120 GPM to 48 PSI	1	108	144.4	58	41 x 45 x 78
		120	159.5	78	41 x 60 x 78
		132	174.6	78	41 x 60 x 78
		144	189.7	78	41 x 60 x 78
		12 (24)	46.5	38	41 x 30 x 51
		24 (48)	76.7	78	41 x 60 x 51
	2	36 (72)	106.7	78	41 x 60 x 64
		48 (96)	134.1	78	41 x 60 x 64
		60 (120)	171.5	78	41 x 60 x 78
		72 (144)	197.3	78	41 x 60 x 78

* 650°F temperature available; consult factory

** 460/3/60 (additional voltages available; consult factory)

Heat exchangers:

40 and 60 GPM – 7.0 sq.ft. for single zone system,
except 96 kW – 14 sq.ft. for all other models

Connections:

40 and 60 GPM – 1-1/2" process, 1" water
90 GPM – 2" process, 1-1/2" water
120 GPM – 2-1/2" process, 1-1/2" water

Technical data shown is subject to change without notice. The company will endeavor to supply the equipment as illustrated but reserves the right to make dimensional and other design changes as required.

For more information on Mokon's HF-2 Series or other products, call our sales department today.



2150 Elmwood Avenue, Buffalo, New York 14207
Phone: 716-876-9951 ■ Fax: 716-874-8048
www.mokon.com ■ E-mail: sales@mokon.com



Designed to Perform. Built to Last.

HF-2 03/18 MOK7662